

Focus on Families and Inclusion

The Provincial Government continues to support families and foster inclusion. Since 2003 student enrollment has declined in our schools by approximately 17 per cent. Budget 2016 focuses on decisions which will deliver positive outcomes for our students, build inclusive communities, and provide supportive housing options for families.

K-12 and Early Childhood Development

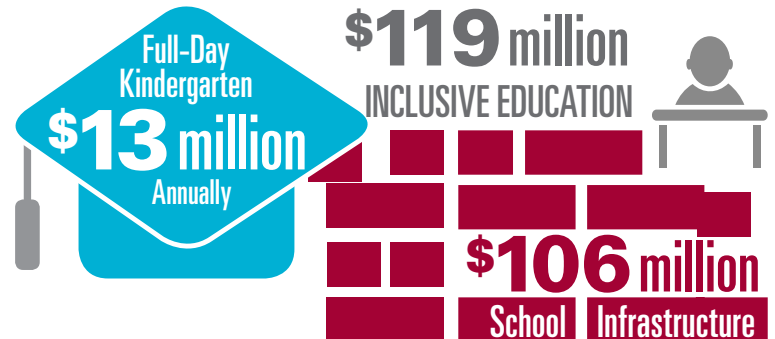
Budget 2016 provides supports for new programs and cutting edge technologies in educational environments. Budget 2016 commitments include:

- Over \$13 million annually for full-day Kindergarten, which will start in September 2016 and include 142 teaching positions and an increase in student assistants.
- \$277,000 to implement the new Premier's Task Force on Educational Outcomes.
- \$119 million to support inclusive education in schools.
- \$38.3 million to support early childhood development.
- Nearly \$106 million for school infrastructure including the completion of ongoing school construction projects, school extensions, repairs and maintenance.
- \$400,000 to hold French and English school board elections by the end of 2016.

Post-secondary Education and Employment

The Provincial Government is committed through Budget 2016 to providing first-class, affordable post-secondary education which will train and prepare the workforce of tomorrow. Budget 2016 commitments include:

- Investing approximately \$63 million, including \$5.1 million in new funding, to support low tuition at Memorial University and the College of the North Atlantic.
- Close to \$24 million for needs-based grants and loans.
- Engaging with the College of the North Atlantic in a review to ensure the college is best meeting the needs of students and its course offerings are optimized and responsive to shifting labour demands.



Inclusive Communities

As a province we must foster a supportive and inclusive environment which ensures all residents are able to live, work and participate in their communities. Budget 2016 commitments include:

- Funding to help individuals and the taxi industry acquire or adapt vehicles for accessibility.
- Funding for recreation and sport development initiatives for persons with disabilities.
- Maintaining teacher allocations for supports for special needs students including resources for students with exceptionalities.
- Investing \$2.9 million to assist private and not-for-profit employers to hire students.

Supportive Housing

Budget 2016 recognizes the importance of providing supportive housing programs, particularly for youth and seniors through investments. Budget 2016 commitments include:

- A \$2.5 million increase for the Supportive Living Program, bringing the total annual funding to \$7.6 million.
- Approximately \$104,000 for rent supplement subsidies in Labrador to help low income households afford private rental market options.